



PINEWOOD

**SHEPPERTON STUDIOS
COMMUNITY LIAISON GROUP MEETING
NOVEMBER 2021**

THE SHEPPERTON TEAM

Andrew M Smith DL, Corporate Affairs Director

Kathryn Maidment, Senior Community and Education Outreach Manager

Alex Chitty, Development Manager

Jon Kinash, Senior Project Manager

Elizabeth Slessor, Senior Project Manager

Matthew Wright, Senior Development Manager

Sara Dutfield, Director, Turley Planning Consultants

James Bevis, Partner, i-Transport

Duncan Findlay, Associate, i-Transport

Andrew Joynt, Land Use Consultants

OVERVIEW

SHP South

- Progress, Programme and Planned Works
- Landscaping Update
- Planning Updates

SHP North West

- Progress, Programme and Planned Works
- Landscaping Update
- Planning Updates

Community Liaison

- Update

River Ash Corridor

- Update and Consultation

Offsite Highways Works

- Pedestrian Crossings and White Gates
- S278 Highways Works

Outstanding Matters / Questions and Answers

SHEPPERTON SOUTH – PROGRESS AND PROGRAMME

Progress Update

- Continuation of enabling works phase.
- Site set up, establishment, access and wheel washing – complete.
- Demolition of buildings – complete.
- Vegetation strip – complete.
- Western landscape bund – underway.
- Cut and fill / site levels – complete early November.

3 Month Outlook

- Commencement of below ground drainage.
- Commencement of below ground ducts.
- Build up of internal road network.
- Utilities disconnections.
- Commence planting of landscape bunds.

Longer Term Programme

- Completion in mid / late 2023.



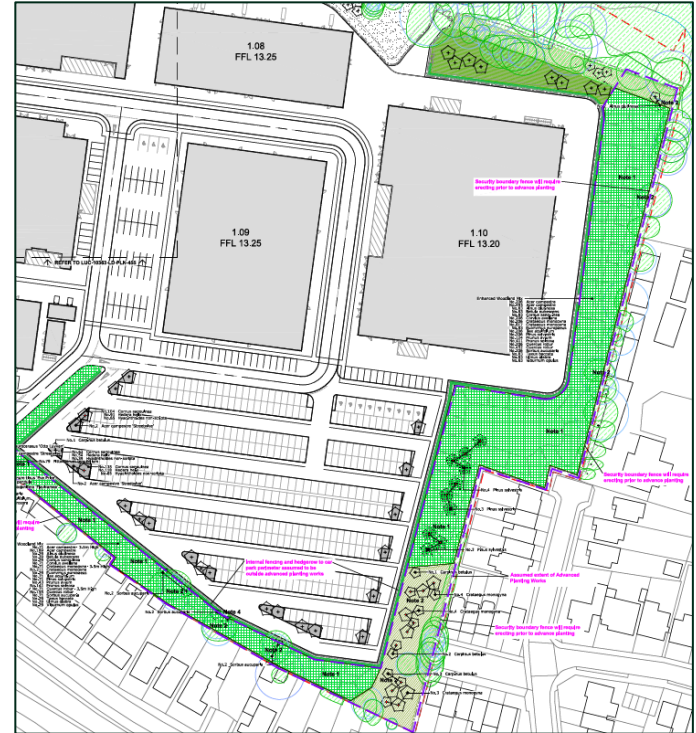
SHEPPERTON SOUTH - LANDSCAPING

Landscape Bunds – Progress Update

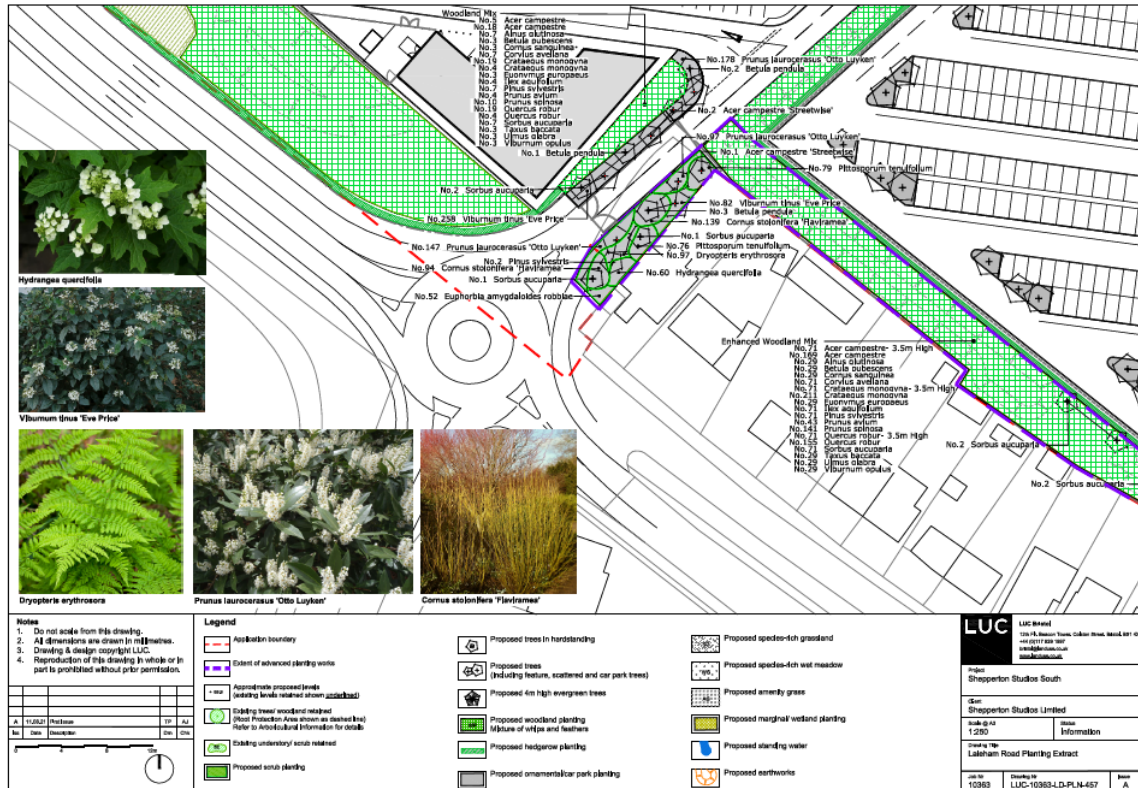
- Landscape bunds to be complete by late 2021.
- Tree planting commences late November 2021.
- Tree planting complete by end of February 2022.

Planting Specification – Site Wide

- Approximately 20,000 predominantly native trees and shrubs to be planted.
- Including approximately 2,000 trees, between 3.5m to 4m in height.
- Species include:
 - Silver Birch
 - Cherry Tree
 - Field Maple
 - Hornbeam
 - Hawthorn
 - Alder
 - Pine



SHEPPERTON SOUTH – ADVANCED PLANTING



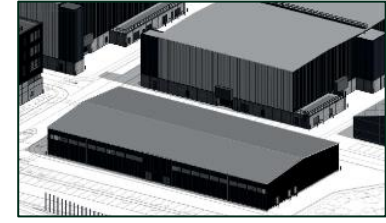
SHEPPERTON SOUTH – PLANNING UPDATE

Updates

- Reserved Matters application to be submitted, reducing height of building 003.
- Reserved Matters application to be submitted replacing three storey office / workshop for single storey workshop.
- Non-Material Amendment to increase planting around building 002.
- Reserved Matters application submitted for MSCP.
- Third party planning applications to relocate phone masts.



Approved Plot 1.04



Proposed Plot 1.04



SHEPPERTON NORTH WEST – PROGRESS AND PROGRAMME

Progress Update

- Landscape bund – complete.
- Attenuation ponds – complete.
- Cut and fill / site levels – complete.
- Below ground drainage – ongoing.

3 Month Outlook

- Commencement of piling.
- Installation of permanent fencing.
- Commencement of steel frames.
- Complete planting of landscape bund.

Longer Term Programme

- Completion in spring 2023.

Planning Update

- Decision for NW Workshop and North Backlot expected late 2021.



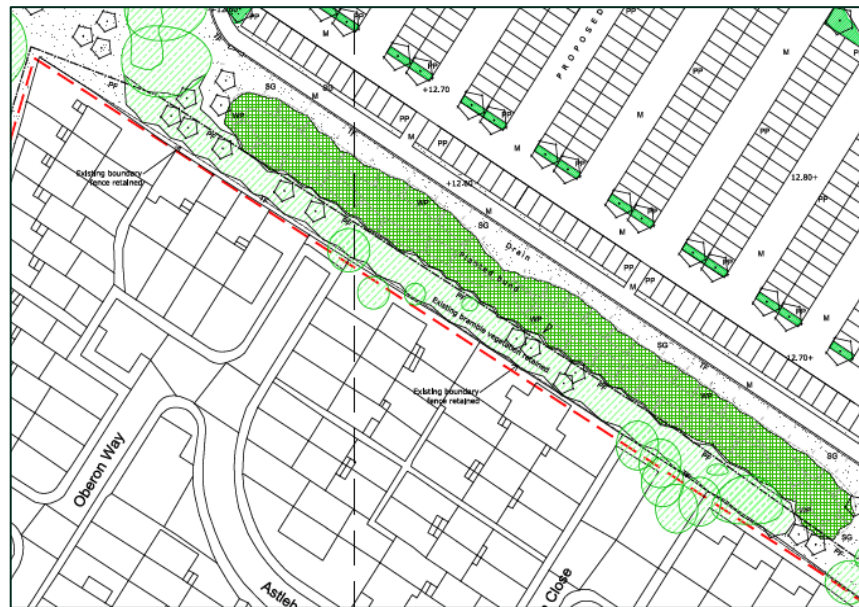
SHEPPERTON NORTH WEST - LANDSCAPING

Landscape Bunds – Progress Update

- Landscape bund to the north of Studios Estate – complete.
- Tree planting commences late 2021 / early 2022.
- Tree planting complete by end of February 2022.

Planting Specification – Site Wide

- Approximately 10,000 predominantly native trees and shrubs to be planted.
- Including approximately 1,000 trees, between 3.5m to 4m in height
- Species include:
 - Silver Birch
 - Cherry Tree
 - Field Maple
 - Hornbeam
 - Hawthorn
 - Alder
 - Pine



SHEPPERTON – COMMUNITY LIAISON

Progress Update

- Completion and opening of Studios Estate play area.
- River Ash Clean Up Day, including River Ash consultation.
- Agreement with LRA re specification of Village Gates.
- Meeting with CRA and LRA, re construction routing.
- Littleton Primary School Visit (18 November).





- Enhancements:**
- Woodland enhancements
 - Riparian enhancements
 - Habitat features
 - Footpath
 - Fencing
 - Amenities
 - Footbridge
 - Clearing debris and waste



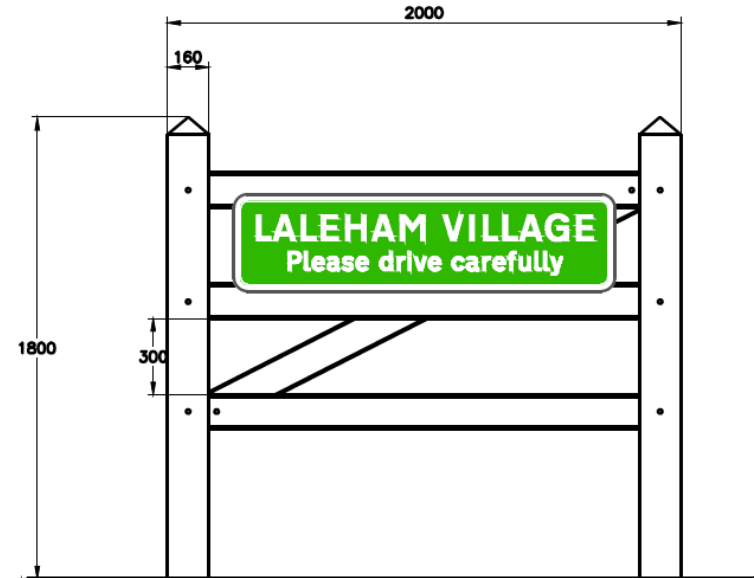
OFFSITE HIGHWAYS WORKS

Laleham Crossing and Village Gates

- Updated location and design for the Village Gates confirmed following review with the LRA.
- Technical Approval and Legal Agreement between Surrey County Council and SSL expected by end of 2021.
- Procurement process near completion ahead of Technical Approval.
- Provisional road space booking made - to be confirmed upon issue of Technical Approval and Legal Agreement.
- Construction expected early 2022.
- Forecast 4-week construction period.

Charlton Crossing

- Revised location chosen by CRA.
- Outline scheme submitted to SCC for comment.
- Implementation timescale to be confirmed.





Any further questions?